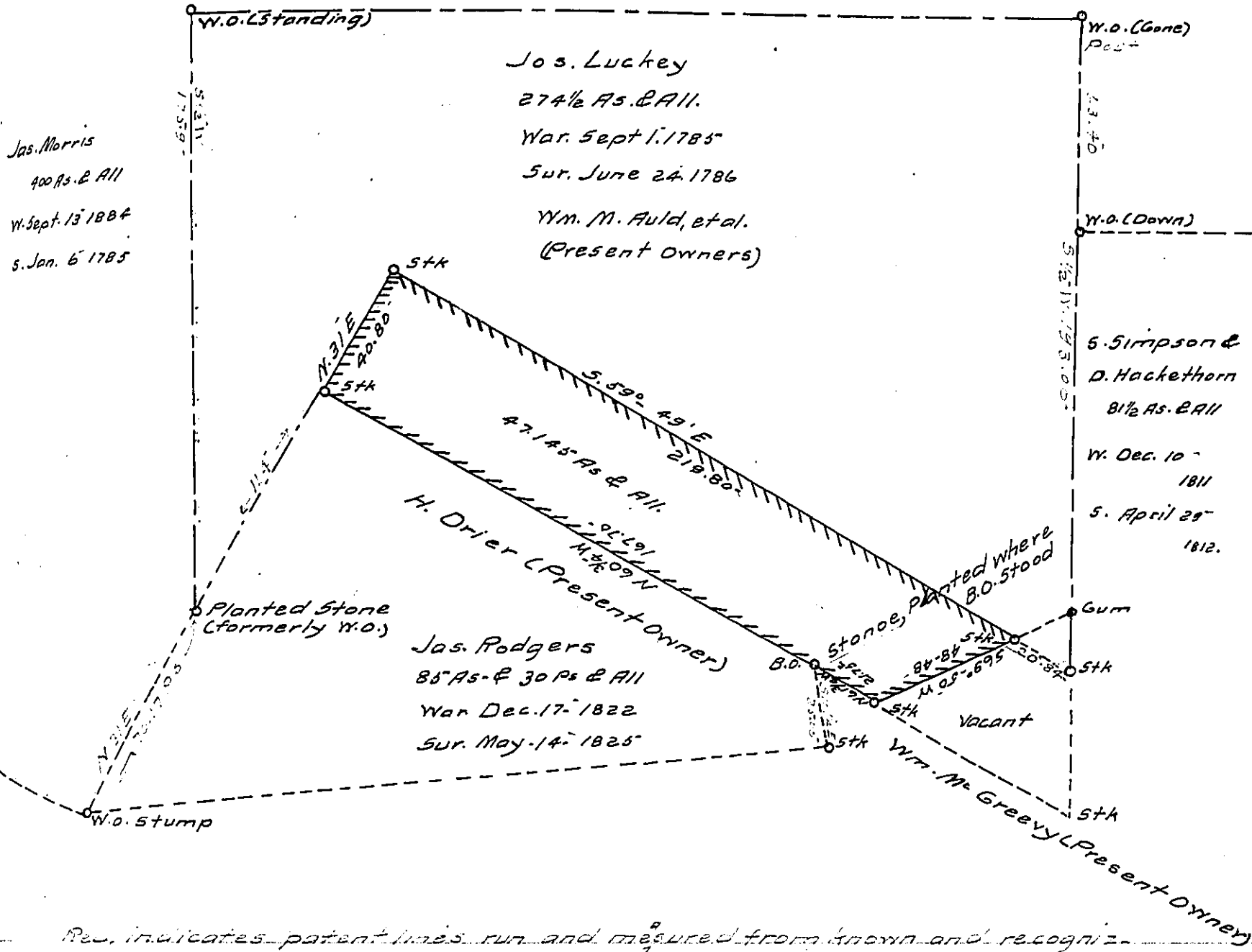


147



Red indicates patent lines run and measured from known and recognized corners, or monuments.

A Draft of a tract of land situated in the Township of Morris and County of Greene, containing 47.145 acres, -----perches and allowance of six per cent. for roads, etc. Surveyed the tenth day of February 1915, in pursuance of a warrant granted to Wm. M. Auld et al. dated the 23rd day of September 1914.

J. C. Webster
County Surveyor

To Hon. Henry Houck,
Secretary of Internal Affairs.

IN TESTIMONY that the above is a copy of the original remaining on file in the Department of Internal Affairs of Pennsylvania, made conformably to an Act of Assembly approved the 16th day of February, 1833, I have hereunto set my Hand and caused the Seal of said Department to be affixed at Harrisburg, this fifth day of January 1917.

Secretary of Internal Affairs.